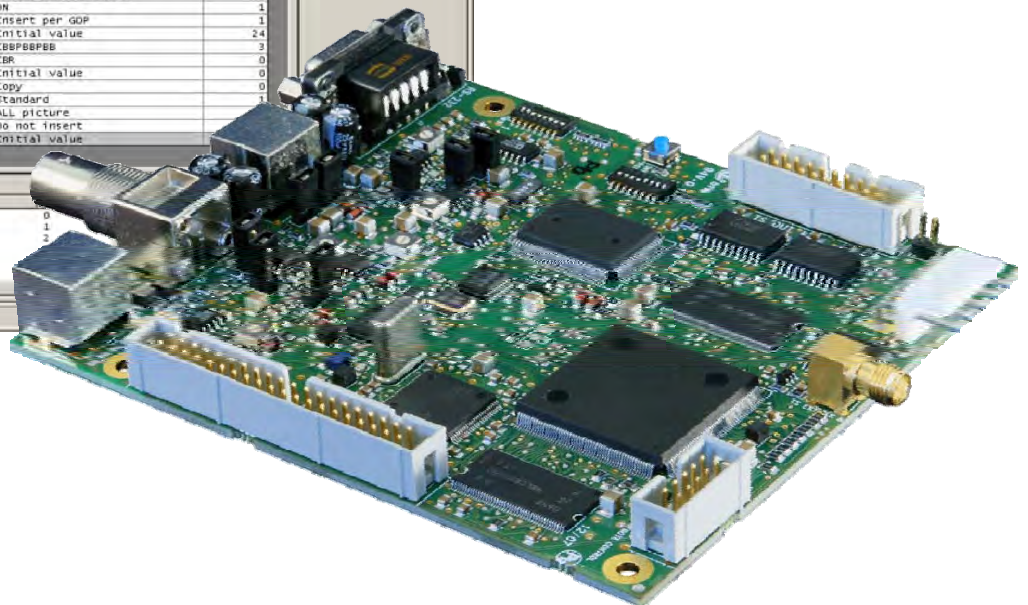
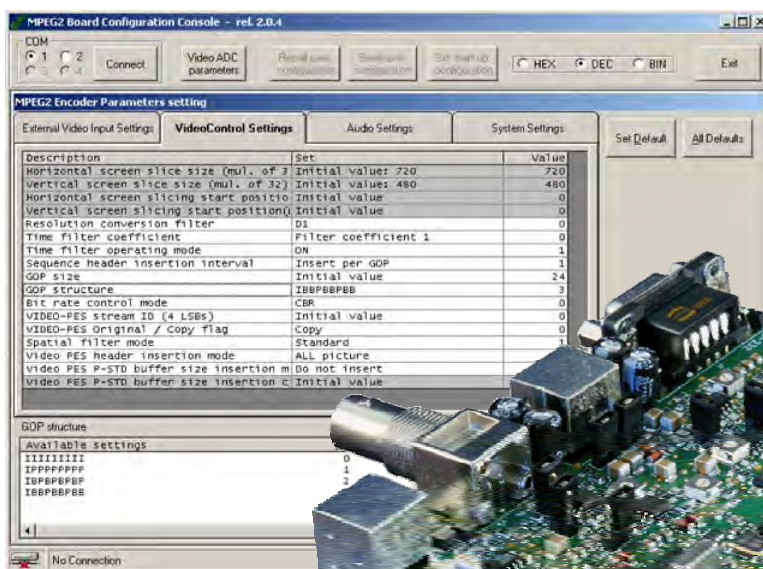


MPEG-2 ENCODER BOARD

The high quality, professional and cost-effective solution



The "MPEG-2 encoder Board" is a high quality, professional, flexible and really cost-effective solution to compress a video/audio signal, according to MPEG-2 standard.

Applications

- Digital TV Broadcasting
- Digital satellite Uplinks for Distribution and Contribution
- DSNG Mobile news gathering
- Digital Microwave Links (Mobile and STL)

Features

- Real time MPEG-2 video/dual audio Encoder (Main Profile @ Main Level - 4:2:0)
- Up to full D1 encoding resolution with up to 720 horizontal pixels
- User configurable Encoder settings through RS232 port (GOP size and structure, resolution filters, bit rate, ...) + four easy to recall pre-defined factory settings
- Teletext or Closed Captioning extraction from video input (for reinsertion in the transport stream through multiplexer board)
- Stand alone operation (with jumpers/switches configuration) and RS232 remote control interface (management software and communication protocol supplied)

MPEG-2 Encoder board

VIDEO INPUTS

Video input format:	Analog: Composite PAL/SECAM/NTSC, Y-C (S-video); Digital: D1 (ITU-R 656) 8 Bit Parallel Option: SDI (with embedded audio or with AES/EBU audio input) with additional board
Composite video input:	1Vp-p / 75Ω / BNC socket
Composite video filter:	Notch or Comb (selectable)
Pre-processing:	TBC (Time Base Corrector) Noise Reduction Filter

VIDEO ENCODING

Standard:	ISO / IEC 13818-2 MP@ML (MPEG-2 4:2:0)
Bit rate:	Up to 15Mb/s
Supported resolutions:	Full D1, 3/4 D1, 2/3 D1, 1/2 D1, SIF, QSIF
Picture size:	Horizontal: up to 720 pixel in 32 pixel steps. Vertical: PAL - up to 576 pixel - NTSC - up to 480 pixel (in 32 pixel steps)
Picture encoding type:	I, P, B
GOP Structure:	Flexible
Minimum latency:	Around 200mS, according to settings (GOP structure, bit rate etc.)

AUDIO INPUTS AND ENCODING

Audio input format:	Analog: Two (mono, stereo, dual, joint stereo) - Digital: LR Multiplex Serial (I2S) Option: SDI (with embedded audio or with AES/EBU audio input) with additional board
Analog audio inputs:	0dBu (adjustable) / 600Ω balanced / mini-DIN 6 pole
Sampling frequency:	32KHz, 44.1KHz, 48KHz
Encoding standard:	ISO / IEC11172-3 (MPEG-1 audio) layer 1/2 – compliant
Bit rate:	Max. 448Kb/s

STREAM AND INTERFACES

Stream type and output interface:	Parallel Transport Stream (SPI-LVTTL) Option: ASI with additional board
System multiplexing:	ISO / IEC 13818-1 (MPEG-2) – PAT and PMT tables

OTHERS SPECIFICATIONS

Pre-settings:	No4 Factory preset + No4 User configurable (by software, via RS232 port)
Teletext / Closed Captioning data:	Extraction from analogue video input

GENERAL SPECIFICATIONS

Power supply:	D.C.
Remote control interface options:	RS232 (management software and communication protocol supplied)
Board dimensions:	110 x 126 mm.
Operating temperature range:	0 to 45° C.



All specifications contained in this document may be changed without prior notice.