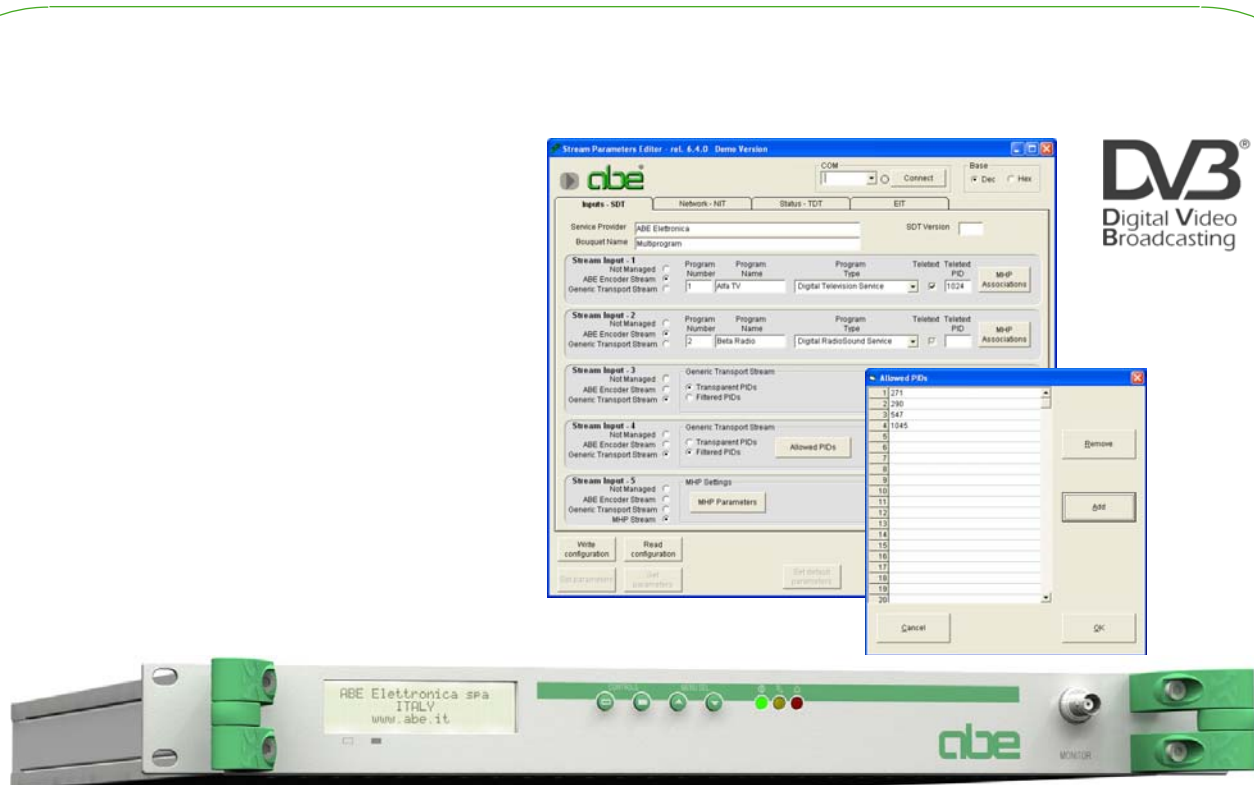


TRANSPORT STREAM MULTIPLEXER/REMULTIPLEXER SERIES

The high quality, professional and cost-effective solution



The **MUX 1000** Transport Stream Multiplexer / Re-Multiplexer series is a high quality, professional, flexible and cost-effective solution.

The Multiplexer combines the output of different Encoders, producing a multi-program Transport Stream.

The MUX 1000 can also “re-multiplex”, modifying existing Transport Stream, adding or deleting programs and/or data (for example MPH data – the Multimedia Home Platform); it also includes and/or modifies tables (for example NIT – Network Information Table – SDT, TDT etc.).

The configuration software is supplied with the product.

Features

- Up to 5 ASI Transport Stream inputs (Standard Version). On request: up to 13 ASI inputs;
- Automatic Transport Stream adaptation (with PCR time restamping);
- NIT (Network Information Table) and SDT (Service Description Table) insertion and / or modification;
- EIT (Event Information Table) and TDT (Time and Data Table) insertion;
- PID Filtering;
- MHP (Multimedia Home Platform) support (associate carousels and other MHP tables to programs);
- Configuration and management software (PC based);
- Dynamic EIT option with specific management software (PC based);
- User-friendly local control with front panel LCD display and keypad;
- RS485; RS232; Ethernet 10/100 Base-T (SNMP and web server support) remote control interface option;
- Stand Alone Unit 1U high.